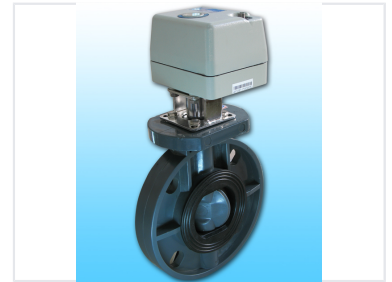


# Industrial Ball Valve with Automated Actuator

This industrial ball valve features an automated actuator for fluid control. The valve is constructed from durable gray plastic and includes a black rubber seal.



## Product Overview

### Industrial Fluid Control Solution

This industrial ball valve features an integrated automated actuator designed for precise fluid control. Built with a durable gray plastic body and a high-quality rubber seal, it ensures reliable performance in demanding industrial environments. The unit includes a robust stainless steel bracket and a weatherproof actuator housing for long-term operational stability.

## Technical Specifications

Body Material	Durable gray plastic
Seal Material	Black rubber
Mounting Bracket	Stainless steel
Actuator Housing	Weatherproof light gray housing
Model Identifier	41106111609053

## Application

Primary Application	Industrial Fluid Control, Automated Flow Regulation
---------------------	---