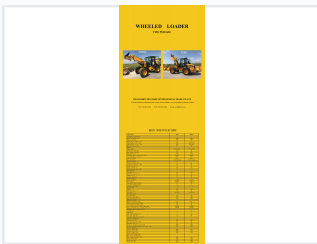


Hydraulic Wheel Loaders

These wheel loaders are fully hydraulic and designed for efficient operation. They feature a robust hydraulic system and comfortable cabin for operator ease and safety.



ADDITIONAL IMAGES



Overview

Versatile Hydraulic Wheel Loaders

These professional-grade hydraulic wheel loaders are engineered for heavy-duty material handling with a rated load capacity of 2000 kg. Available in standard and telescopic configurations, these machines offer impressive breakout forces and efficient cycle times to maximize job site productivity. Built with robust Kohler engines and advanced hydraulic systems, they deliver reliable performance in demanding environments.

Performance Metrics

Key Performance Indicators

2000 kg
Rated Load

56 KN
Max Breakout Force

30 °
Max Grade Ability

Technical Specifications

Model Comparison

Feature	V250	V250T
Operating Weight (kg)	6300	6500
Dump Height (mm)	2780	3200/4160
Total Cycle Time (s)	11	20
Overall Length (mm)	5900	6100

Engine and Power

Engine Specifications

- Engine Model: Kohler2504
- Rated Power: 55 KW
- Max Torque: 300 N.m
- Displacement: 2.48 L
- Fuel Consumption: 240 g/kw.h

Features

Machine Features

Fully Hydraulic, Turbocharged Cooling, Auto-flat Bucket Function, Pendulum Axle (12°)