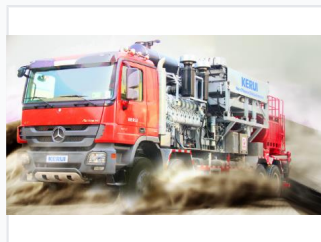


# Hydraulic Fracturing Pumper Unit

The fracturing pumper injects high-pressure fluid to fracture strata and deposit proppant. It is used in deep, middle-deep, and shallow wells for shale gas and coalbed methane fracturing operations.



## ADDITIONAL IMAGES



## Overview

### High-Performance Fracturing Pumper

This hydraulic fracturing pumper unit is engineered for high-pressure fluid injection in deep, medium, and shallow wells, including shale gas and coalbed methane fields. It features a specialized high-mobility truck chassis and a high-power plunger pump to deliver stable, reliable performance in demanding environments. The unit integrates advanced safety systems, including electrical and mechanical overpressure protection, along with remote Ethernet network control for precise operation.

## Technical Specifications

Model	KTYL1200-105	KTYL2250-105	KTYL2500-105/140	KTYL3000-105/140
Max Working pressure (MPa)	105	105	105 / 140	105 / 140
Max Displacement (L/min)	1507 / 1431	1873 / 2460	2460 / 1894	3133 / 2038
Max Output WHP	715	1490	1700	1980
Plunger diameter (mm)	76.2 / 101.6	114.3 / 101.6	101.6 / 91.25	101.6 / 114.3
Over dimension (mm)	1040x2500x3870	1110x2500x4170	1190x2500x4150	1240x2500x4140
Weight (kg)	27000	39000	41000	46000
Standard configuration	Truck mounted	Truck mounted	Truck mounted	Truck mounted
Fracturing plunger pump	KR1200	KR2250	KR2500CR1000	KR3000
Chassis	MAN	MAN	MAN	MAN
Engine	CAF / MTU	CAF / CUMMINS / MTU	MTU / CUMMINS	
Engine power (kW)	857	1680	1860	2235
Transmission	Aisin 58E10M	Aisin 58E50M	CAF Tr-55-E710	Team Duc TAB04501
Radiator installation mode	Vertical	Horizontal	Horizontal	Horizontal
Control system		Network automatic control		
High pressure electrical protection device	105	105	105 / 140	105 / 140
Others	Electrical overpressure protection device, mechanical overpressure protection system			
Control system	Local / Network control			
<b>Optional</b>				
Structure	Truck mounted / Skid mounted			
Chassis	MAN	MAN	MAN	MAN
Plunger diameter (mm)	114.3	101.6/127	114.3/127	127

Detailed view of model configurations and technical parameters for different fracturing pumper units.

## Performance Metrics

**140 MPa**

Max Working Pressure

**3133 L/min**

Max Displacement

**1980 WHP**

Max Output WHP

## Model Specifications

Model	Max Pressure (MPa)	Max Output (WHP)	Weight (kg)
KTYL1200-105	105	715	27000
KTYL2250-105	105	1490	39000
KTYL2500-105/140	105/140	1700	41000
KTYL3000-105/140	105/140	1980	46000

## Features & Capabilities

### FEATURES & SUPERIORITY

- The unit uses the specialized truck chassis, with high off-road capability.
- The unit is capable of pumping various fluids.
- The unit adopts the electrical overpressure protection system.
- High power and high pressure plunger pump with stable and reliable quality.
- The remote Ethernet network control ensures the fracturing operation safety and reliability.

The unit features a specialized truck chassis with high off-road capability and remote Ethernet network control for safe, reliable fracturing operations.

### Key Features

- Specialized truck chassis with high off-road capability
- Electrical and mechanical overpressure protection systems
- Remote Ethernet network control for enhanced safety
- High-power, high-pressure plunger pump
- Versatile fluid pumping capabilities

### Configuration Options

Truck Mounted, Trailer Mounted, Skid Mounted, Vertical Radiator, Horizontal Radiator