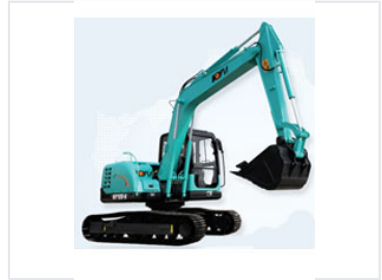


# Hydraulic Excavator

This hydraulic excavator is a construction machine designed for digging and moving materials. It features a powerful hydraulic system and durable tracks for stability.



## Overview

### KY105 Hydraulic Excavator

The KY105 hydraulic excavator is a robust construction machine engineered for versatile performance in demanding job sites. Featuring a powerful hydraulic system and durable track undercarriage, it delivers exceptional stability, maneuverability, and digging force. Its compact design ensures efficient operation in confined spaces, while the operator-focused cabin enhances productivity during extended shifts.

## Performance Metrics

### Key Performance Metrics

**105**

Model Series

## Technical Features

### Core Features

High Digging Force, Compact Design, Durable Tracks, Powerful Hydraulics

## Operational Capabilities

### Primary Functions

- Material excavation
- Lifting operations
- Material transport on-site
- Confined space operation