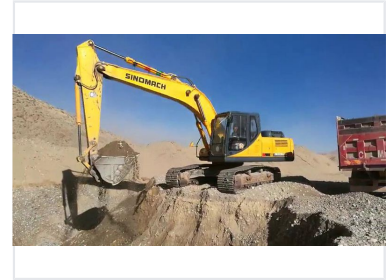


Hydraulic Crawler Excavator

This hydraulic crawler excavator is equipped with a reliable engine. It has a reliable hydraulic system with imported pumps, motor and valves.



ADDITIONAL IMAGES



Overview

Robust Performance for Demanding Tasks

This crawler excavator is engineered for heavy-duty construction, mining, and infrastructure projects requiring high durability and precision. It features a powerful engine paired with an advanced hydraulic system to ensure smooth operation during digging, trenching, and material handling. Designed with operator efficiency in mind, the machine includes an ergonomic cabin and a stable undercarriage that maintains performance across various challenging terrains.

Key Performance Metrics

Key Performance Metrics

3255

Model Series

Technical Specifications

Cabin & Comfort

- Ergonomic cabin design
- Enhanced operator visibility
- Advanced controls and instrumentation
- Comfortable working environment

Structural Features

- Robust crawler undercarriage
- High digging force
- Optimized lifting capacity
- Precise hydraulic boom and arm control

Best Suited Applications

Construction, Mining, Infrastructure Projects, Material Handling, Trenching