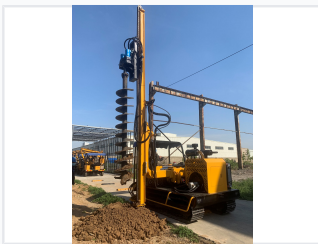


Hydraulic Crawler Driver for Guardrail and Solar Ground Screws

This hydraulic crawler ground screw machine is designed for installing highway guardrails and solar panel mounting systems. It features a robust crawler system for maneuverability on various terrains and a powerful hydraulic system for efficient screw driving.



ADDITIONAL IMAGES



Overview

Professional Hydraulic Crawler Driver

Designed for versatility and efficiency, this hydraulic crawler driver is the ideal solution for solar power station construction and highway guardrail installation. The machine features a robust crawler system for superior maneuverability across various terrains and a high-precision hydraulic system. With advanced components like a reinforced C-channel guide rail and specialized borer pole caps, it ensures durability, stability, and consistent performance on the job site.

Performance & Capacity

Diesel Engine Power	53 kw
Max Walking Motor Torque	5700 Nm
Rotary Motor Torque	4000 Nm
Walking Speed	1600 m/h
Grade Ability	30 °

Drilling & Piling Specs

WHICH TYPE PULLS OUR PILE DRIVER CAN POST

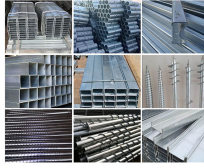
FIGURE 1 WITH HYDRAULIC HAMMER TO RAM THE POST:

Available for the following range of post:

• C-Shape • Omega-Shape • H-Shape • Sigma-Shape

• Round-Shape • W-Beam • Square-Shape • Screwing-Shape

Every post size can be customized as the shape of your post.



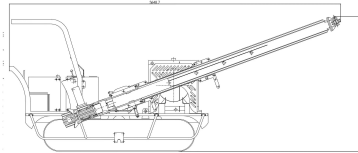
The pile driver supports multiple post shapes including C, Omega, H, Sigma, and W-beam configurations.

Drilling/Piling Depth	3500 mm
Auger Drilling Diameter	0-300 mm
Standard Piling Stroke Height	3.5 m
Compatible Post Shapes	C Shape, Omega Shape, H Shape, Sigma Shape, Round Shape, W Beam, Square Shape, Screwing Shape

Hydraulic System

Hydraulic System Pressure	16-20 Mpa
Total Hydraulic System Flow	100 l/min

Physical Dimensions



Compact design optimized for maneuverability and operation in confined spaces.

Net Weight	4500 kg
Chassis Dimensions (L*W*H)	2002*1800*520 mm

Service & Terms

Warranty	1 year (excluding hammer)
Typical Lead Time	3 days