

# Hydraulic Brake Valve with Solenoid Actuation

This brake valve features an integrated pressure reducing valve. A 3-way, 2-position solenoid valve regulates hydraulic oil and fluid flow for electrically controlled braking.



## Product Overview

### Hydraulic Brake Valve with Solenoid Actuation

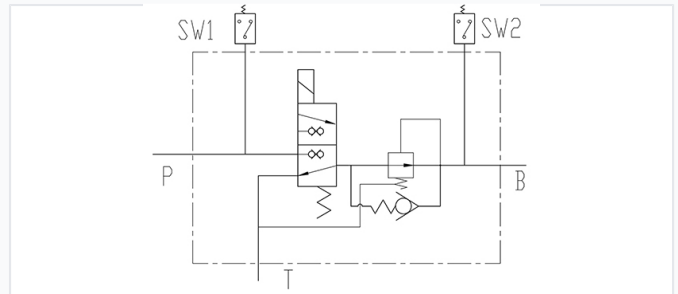
This hydraulic brake valve is engineered with an integrated pressure reducing valve for precise control. It utilizes a 3-way, 2-position solenoid actuator to effectively regulate the flow of hydraulic oil and fluids, enabling reliable, electrically controlled braking operations. Designed for robust performance, it is suitable for demanding hydraulic circuits requiring consistent pressure management and responsiveness.

## Technical Specifications

### Технические характеристики

Давление впуска масла	20МПа
Напряжение электромагнитного клапана	DC24В
Давление слива	≤0.5МПа
Пределы вязкости	10-380 мм²/с
Предел температуры масла	-20°C--100°C
Чистота масла	Не ниже GB/T 14039-2002 класса 19/16 или NAS 1638 класса 10
Масса	3.8кг

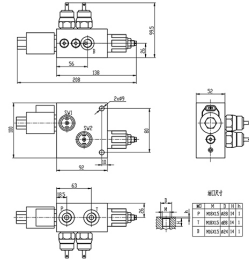
Summary of key operational parameters including pressure ratings and oil requirements.



Hydraulic schematic illustrating the flow path, solenoid actuation, and switch integration (SW1/SW2).

<b>Oil Inlet Pressure</b>	20 MPa
<b>Solenoid Voltage</b>	DC24V
<b>Drain Pressure</b>	<0.5 MPa
<b>Viscosity Range</b>	10-380 mm <sup>2</sup> /s
<b>Operating Temperature</b>	-20°C to 100°C
<b>Required Oil Cleanliness</b>	GB/T 14039-2002 Class 19/16, NAS 1638 Class 10
<b>Weight</b>	3.8 kg

## Dimensions & Ports



Detailed dimensional drawing highlighting port sizes (P, T, B) and mounting points.

### Physical Dimensions

**208 mm**

Length

**100 mm**

Height

**52 mm**

Width

### Port Details

Port	Size	Diameter	Height
P Port	M18x1.5	28	14
T Port	M18x1.5	28	14
B Port	M16x1.5	24	14