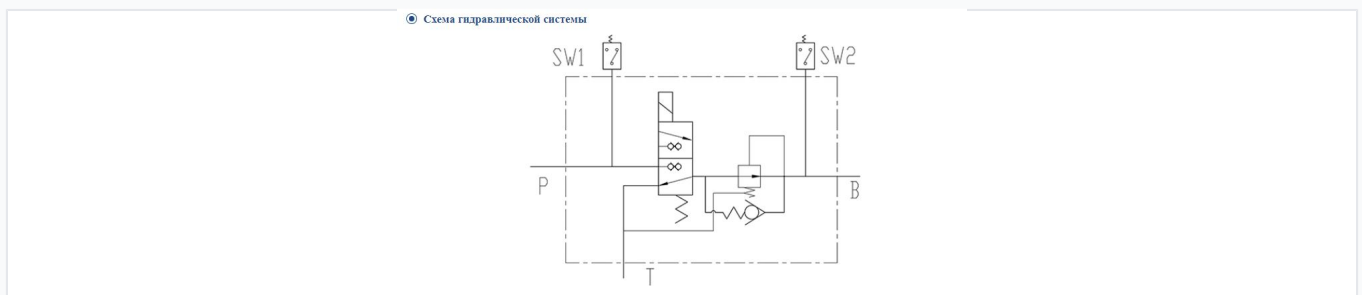


Hydraulic Brake Valve with Pressure Reducing Valve

This brake valve incorporates an integrated pressure reducing valve. A 3-way 2-position solenoid valve regulates hydraulic oil flow to facilitate electrically controlled braking.



Product Overview



Hydraulic circuit diagram illustrating the integration of the brake valve, including pressure, tank, and return lines.

Hydraulic Brake Valve with Integrated Pressure Reduction

This hydraulic brake valve is engineered with an integrated pressure reducing valve for precise control. It utilizes a 3-way, 2-position solenoid valve to regulate hydraulic oil flow and fluid pressure, enabling reliable, electrically controlled braking operations. Designed for integration into demanding hydraulic circuits, it provides robust performance and consistent operation.

Technical Specifications

Max Oil Inlet Pressure	20 MPa
Electromagnetic Valve Voltage	DC24V
Max Drain Pressure	0.5 MPa
Viscosity Limits	10-380 mm ² /s
Operating Temperature	-20°C to 100°C
Required Oil Cleanliness	GB/T 14039-2002 class 19/16, NAS 1638 class 10
Mass	3.8 kg

Port & Connection Details

Port Configuration

Port	Thread	Diameter (mm)	Depth (mm)
P	M18x1.5	28	14
T	M18x1.5	28	14
B	M16x1.5	24	14