

Hydraulic Accumulator Filling Valve

This hydraulic accumulator filling valve uses the main hydraulic system to generate power. It achieves full hydraulic braking of the vehicle by filling the accumulator to maintain constant brake pressure.



Overview

Hydraulic Accumulator Filling Valve

This hydraulic accumulator filling valve is engineered to integrate seamlessly into main hydraulic systems to generate power and facilitate full hydraulic braking. It features an integrated one-way valve and pressure compensation valve, ensuring the accumulator maintains consistent brake pressure. Designed for reliability and compactness, this unit effectively reduces pump cycle times and can be installed at a distance from the brake valve.

Performance Metrics

Maximum Pressure

20 MPa

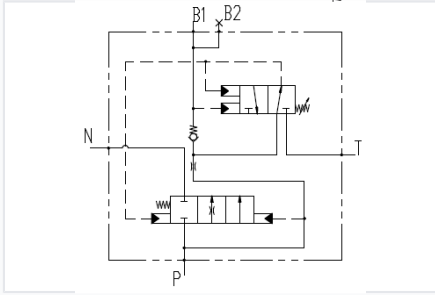
Maximum Pressure

Maximum Flow

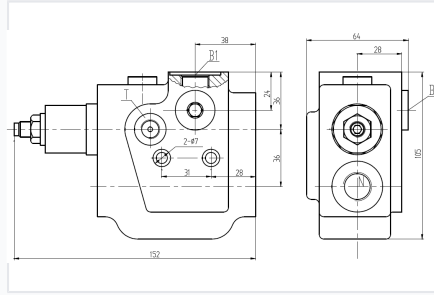
70 L/min

Maximum Flow

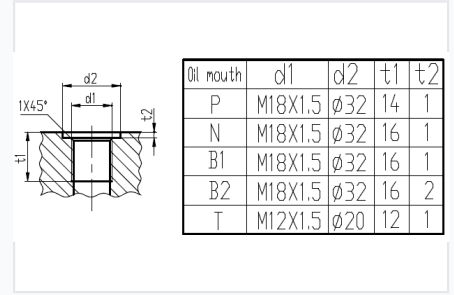
Technical Specifications



Hydraulic system schematic showing the integration of the filling valve, solenoid-operated control, and pressure relief valve.



Dimensional outline showing key measurements including 152mm length and 105mm height for installation planning.



Detailed connection port dimensions including M18x1.5 and M12x1.5 thread specifications.

Liquid Filling Flow	6 [^] 17MPa
Hydraulic Fluid	Mineral oil (HL, HLP) in accordance with DIN 51 524
Operating Temperature	-20 to 100 °C
Viscosity Range	10 [^] 380mm ² /s
Oil Cleanliness	GB/T 14039-93 19/16 or NAS 1638 level 10
Weight	6.5 Kg

Applications

Compatible Machinery	Grader, Wheel excavator, Forklift, Wheel loaders, Hoisting Machinery, Other walking machinery
-----------------------------	---