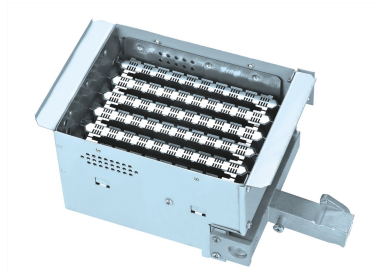


# Household Appliance Balance Burner

This balance burner is designed for household electrical appliances. It features a robust metal construction with ventilation holes for efficient combustion and temperature regulation.



## Product Overview

### High-Efficiency Balance Burner

This balance burner is engineered for household appliance applications, featuring robust metal construction and a rectangular housing design. It utilizes segment control combustion technology to ensure complete fuel burning and high thermal efficiency. Designed for versatility, this unit supports both L.P.G and N.G fuel sources, making it a reliable component for various heating needs.

## Technical Specifications

### Build Quality

Robust Metal Construction • Fine Craftsmanship

### Performance Highlights

**100 %**

Combustion Efficiency

<b>Combustion Type</b>	Segment Control Combustion
<b>Compatible Fuels</b>	L.P.G, N.G