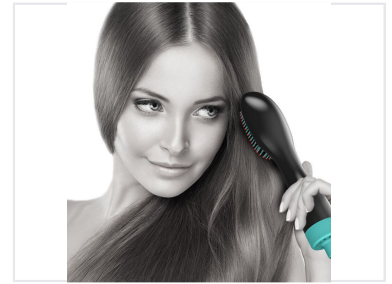
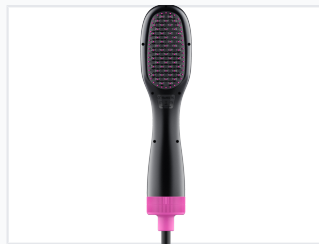
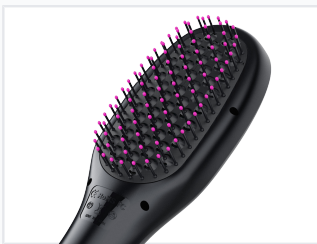


Hot Air Styling Brush

This hot air styling brush combines the functionality of a hair dryer and styling brush. It is engineered to dry and style hair at the same time.



ADDITIONAL IMAGES



Product Overview

Professional Styling Solution

This hot air styling brush combines the functionality of a hair dryer and a styling brush into one efficient device. It is designed to dry and style hair simultaneously, offering a convenient all-in-one solution for hair care routines. With multiple working levels, it provides versatile heat and speed settings to suit different styling needs.

Performance & Settings

Working Levels

- Low temperature with high speed wind
- High temperature with low speed wind
- High temperature with high speed wind

Compliance & Standards

Certifications

CE, RoHS, FC

Manufacturing

Country of Origin

China

Design Features

Key Features

Ergonomic handle • Multi-row bristles • Protective bristle tips