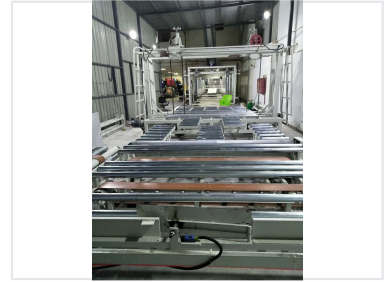


Horizontal Continuous Polyurethane Foam Machine

This machine is designed for producing soft and rigid urethane foam with densities from 10 to 70 kg/cm³. It is suitable for use in furniture, shoes, electronics, packaging, and other industries, and is available with full automatic computer control and manual control.



ADDITIONAL IMAGES



Product Overview

Horizontal Continuous Foaming Solution

This horizontal automatic continuous foaming machine is engineered for the high-volume production of both soft and rigid polyurethane foam. Featuring dual-mode operation with full automatic computer control and manual override, it ensures precise chemical mixing and consistent output. It is an ideal solution for diverse industries ranging from furniture and footwear to aviation and industrial insulation.

Technical Specifications

Model	KX-1300
Operating Voltage	380V AC
Mixing Head Power	30 KW
Total Power Consumption	120 KW

Dimensions and Capacity

Machine Dimensions	1750 x 400 x 300 cm
Overall Length	16.9 M
Conveyor Belt Length	50 M

Performance

Supported Foam Density

10 kg/cm³
Min Density

70 kg/cm³
Max Density

Foam Compatibility	Soft Urethane Foam, Rigid Urethane Foam
--------------------	---

Applications

Suitable Industries

- Furniture Manufacturing
- Chest Circumference/Apparel
- Footwear
- Electronics
- Packaging
- Aviation & Spaceflight
- Conveyance
- Heat Preservation/Insulation