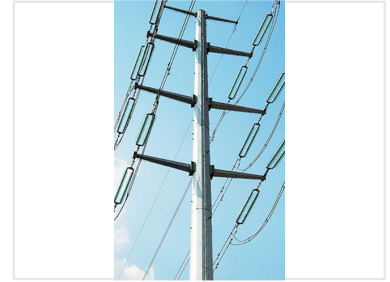


High-Voltage Power Transmission Line

High-voltage power transmission lines are designed for efficient electricity transfer. They utilize lattice steel towers with insulators and multi-stranded aluminum conductors.



Product Overview

High-Voltage Transmission Solutions

These tubular support structures utilize high-strength steel designed for the demands of modern utility infrastructure. Engineered for structural integrity and corrosion resistance, these units feature galvanized steel sections and support multi-circuit configurations. With proven reliability in global markets, these poles offer an efficient solution for long-distance electricity transmission.

Technical Specifications

Structural Features

- Tubular monopole design
- Lattice steel tower construction
- Suspension-type insulators
- Multi-circuit capacity

Key Markets Served

North America • Europe • Asia Pacific

Performance History

50 Years

Years of Experience

30 Million USD

Annual Export Volume

Material Type	High strength steel with low silicon content
Surface Finish	Galvanized
Compliance and Ratings	Utility Grade, High-Strength, Corrosion Resistant