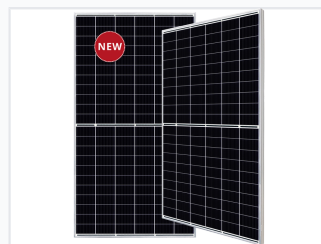
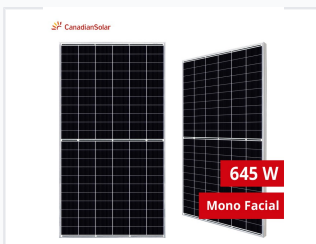


High Power Mono PERC Solar Module

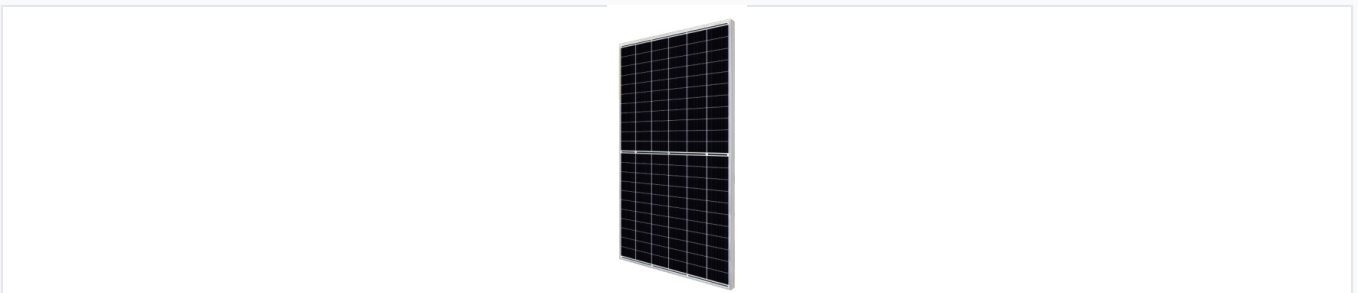
This high-power dual cell PERC module has power ranges from 640-670 W and 580-610 W. The module achieves efficiency up to 21.6 % and reduces BOS and LCOE costs.



ADDITIONAL IMAGES



Overview



Advanced cell technology layout for improved energy yield.

High Power Mono PERC Solar Module

This high-efficiency solar module utilizes advanced Mono PERC technology to maximize energy conversion, offering a power range of 580W to 670W. Designed for utility-scale and commercial applications, it features robust construction to withstand harsh environmental conditions while delivering superior performance. The module incorporates split junction boxes for better heat dissipation and optimized cable lengths to reduce energy loss, ensuring a lower LCOE and BOS cost.

Key Features

Performance Highlights

21.6 %

Max Efficiency

670 W

Max Power

3.5 %

LCOE Reduction

Key Advantages

Lower BOS Cost, Lower LCOE, LID/LeTID Mitigation, Better Shading Tolerance, IP68 Junction Box

Mechanical Data



Optimized split junction box design for heat dissipation and safety.

Cell Type	Mono-crystalline
Cell Arrangement	132 [2 x (11 x 6)]
Dimensions	2384 x 1303 x 35 mm
Weight	34.4 kg
Glass Specification	3.2 mm tempered glass

Electrical Data

Module Fire Performance CLASS C	
Operating Temperature	-40°C ~ +85°C
Max System Voltage	1500V / 1000V
Max Series Fuse Rating	30 A
Application Classification	Class A