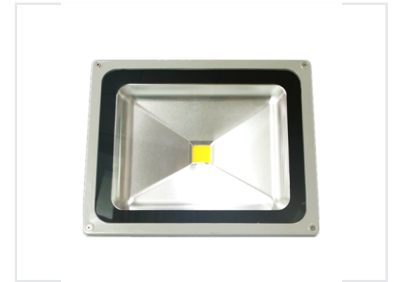


High-Intensity LED Floodlight

This high-intensity LED floodlight is suitable for both outdoor and indoor illumination. The light features a durable rectangular housing with a light gray finish and a black gasket to protect against environmental elements.



Product Overview

High-Intensity Professional Illumination

This high-intensity LED floodlight is engineered for versatile use in both indoor and outdoor environments. Its robust construction ensures long-term durability, featuring a protective black gasket against environmental elements and a stable, screw-secured housing. With its centrally located LED and a precision-engineered faceted interior, this fixture provides optimized light distribution for demanding professional applications.

Technical Specifications

Mounting Style	Fixed, four-corner screw mount
Finish	Light gray
Protective Measures	Environmental Sealing, Black Protective Gasket, Robust Housing
Optical System	Reflective, faceted interior for optimized light distribution