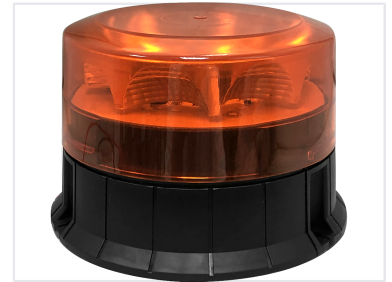


# High-Intensity LED Beacon for Hazard Warning

This high-intensity LED beacon is ECE R65/R10 approved. It provides high light efficiency through its enhanced reflector design.



## Overview

### High-Intensity Hazard Beacon

This high-intensity LED beacon is specifically engineered for robust signaling and hazard warning applications in demanding environments. Featuring a durable polycarbonate dome and a resilient nylon/rubber base, it is built to withstand significant vibration and weather exposure. With its versatile voltage compatibility and IP65 rating, it serves as a reliable solution for construction, industrial, and emergency vehicle safety.

## Technical Specifications

### Waterproof Rating

IP65

### Light Source

8 LEDs

### Working Voltage

DC 12V, DC 24V

### Model Identifier

EA9818

## Environmental & Build

### Operating Temperature Range

**-30**

Min Temp

**50**

Max Temp

### Construction Materials

- Polycarbonate (Dome)
- Nylon / Rubber (Base)