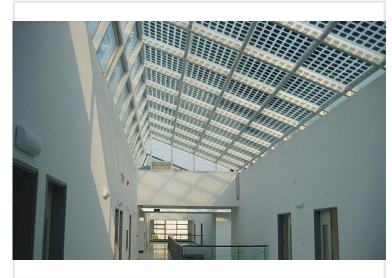


High-Efficiency Water Heater Plate

This high-efficiency water heater plate is designed for optimal heat transfer and energy conservation. Constructed with durable, corrosion-resistant materials, it ensures long-lasting performance and reliability.



Product Overview

High-Efficiency Water Heater Plate

This high-efficiency water heater plate is engineered for optimal heat transfer and significant energy conservation. Constructed from durable, corrosion-resistant materials, it ensures long-term performance and reliability in demanding environments. The precision-engineered surface promotes uniform heating, making it an ideal choice for a wide variety of residential, commercial, and industrial water heating applications.

Technical Specifications

Module Type	BIPV-160W Mono and Poly
System Size	14 KWp

Project Details

Completion Date	September 2007
Installation Location	Luoyang, China

Compliance and Quality

Certifications	Corrosion-Resistant, Industry Standard Compliant
----------------	--