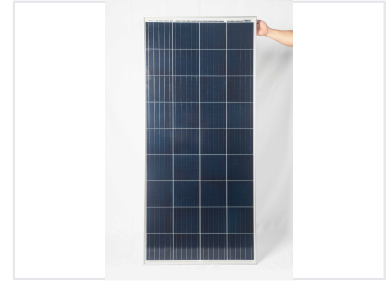


High-Efficiency Solar Module

This high-efficiency solar module is designed for residential, commercial, and utility-scale applications. Constructed with high-transmittance, tempered glass, it ensures enhanced durability and maximum light capture.



ADDITIONAL IMAGES



Product Overview

High-Efficiency Energy Solution

This high-efficiency solar module is engineered for versatile use in residential, commercial, and utility-scale installations. Featuring high-transmittance tempered glass and a robust frame design, it ensures maximum light capture and long-term structural reliability. The module excels in diverse environmental conditions, including low-light scenarios, making it an ideal choice for both grid-tied and off-grid power systems.

Technical Specifications

Power Rating

170 W

Rated Power

Build Quality

Tempered Glass, High-Transmittance, Weatherproof, Robust Frame

Application

Suitable Applications

- Residential
- Commercial
- Utility-scale
- Grid-tied systems
- Off-grid systems