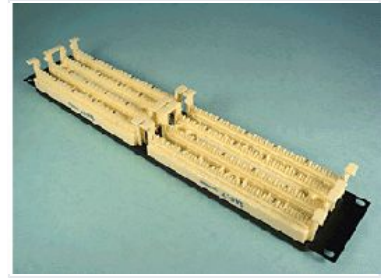


# High-Density Punch Down Block for Telecommunications Cables

This high-density punch down block is designed for terminating and connecting multiple telecommunications cables. It provides a space-saving solution for high-density wiring applications, ensuring efficient cable management and organization.



## Product Overview

### High-Density Connectivity Solution

This high-density punch down block is engineered for efficient termination and connection of multiple telecommunications cables. Featuring a robust mounting base and durable construction, it ensures reliable performance in demanding environments like data centers and telecommunications closets. The design prioritizes space-saving and organized cable management, making it an ideal choice for structured cabling systems.

## Technical Features

Termination Type	Insulation Displacement Connectors (IDC)
Design Features	High-Density, Robust Mounting Base, Durable Construction

## Applications

### Ideal Environments

- Structured cabling systems
- Data centers
- Telecommunications closets

### Primary Benefit

Space-saving • Efficient Cable Management