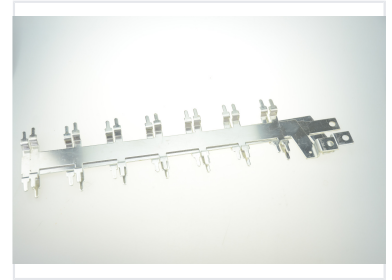
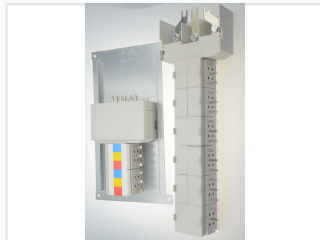
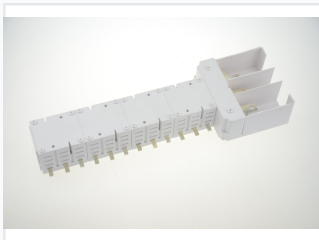


# High Current Busbar

This busbar is designed to carry high current in power transmission and distribution systems. It is engineered with robust materials to ensure optimal performance and safety.



## ADDITIONAL IMAGES



## Product Overview

### High-Performance Busbar System

This busbar system provides a modern, efficient alternative to traditional circuit breaker connection methods. Engineered for high-current applications, it features a wider contact area that significantly reduces power consumption and temperature rise during operation. The modular design is fully customizable to meet specific international electrical standards and regional requirements.

## Technical Features

### Key Advantages

- Wider contact area for improved efficiency
- Low power consumption
- Reduced temperature-rise during operation
- Modular construction for versatile installation
- Color-coded phase identification

### Connection Interface

Blade-style terminals • Metal pin interconnects • Modular mounting plate

### Construction & Finish

Silver-plated finish, Corrosion resistant, High-grade conductive material, Durable insulating housing

## Applications

### Suitable Environments

- Power transmission systems
- Electrical distribution systems
- Switchgear assemblies
- Control panels
- High-power electrical equipment