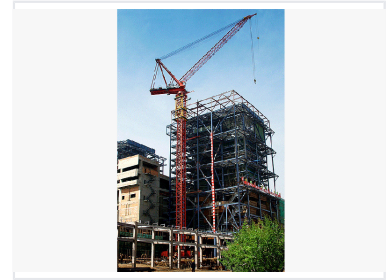


# High-Capacity Tower Crane

This tower crane is designed for heavy lifting in construction and industrial environments. It features a long reach and high lifting capacity, making it suitable for constructing tall structures and moving large components.



## Product Overview

### Industrial High-Capacity Tower Crane

The FZQ Series anchorage luffing-jib tower cranes are designed for large-scale industrial projects including thermal, hydro, and nuclear power plant construction. These cranes feature advanced design concepts to handle heavy-duty lifting in narrow or high-rise environments. With multiple models available, this series ensures excellent performance and reliability for critical infrastructure and steel structure erection.

## Technical Capabilities

### Key Application Sectors

- Thermal and Hydropower construction
- Nuclear power plant erection
- Petroleum and Chemical industry
- High-rise steel structures
- Tower boiler lifting

### Certifications & Patents

National Patents • International Advanced Standard

### Available Models

FZQ1380, FZQ1650, FZQ2200, FHTD1650