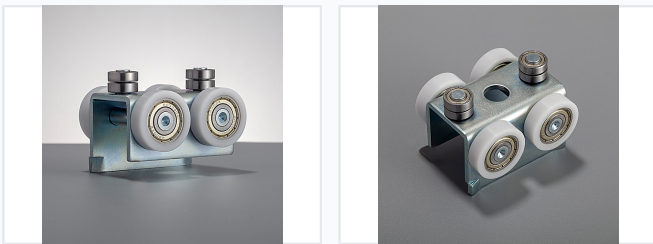


# Heavy-Duty Metal Pulley System

This heavy-duty pulley system features a durable metal frame and multiple rollers. It is designed for smooth and reliable operation in various industrial and mechanical applications.



## ADDITIONAL IMAGES



## Product Overview

### Industrial Heavy-Duty Pulley System

This heavy-duty pulley system is engineered for demanding industrial environments, featuring a robust metal frame with a galvanized finish for superior corrosion resistance. It is equipped with six durable nylon wheels integrated with high-precision ball bearings to ensure smooth operation and efficient load distribution. Designed for reliability and long-term performance, this system provides consistent support for heavy-load applications.

## Technical Specifications

Part Number	11.764.N003381
Identification Codes	220029, 20Q03001, 220022

## Construction

### Material Composition

- Metal frame
- Nylon wheels

Number of Wheels	6
Finish	Galvanized

## Features

### Key Features

Corrosion Resistant • Integrated Ball Bearings • Heavy-Duty • Industrial Grade