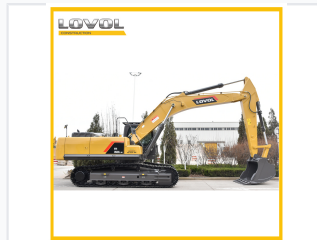


Heavy-Duty Hydraulic Excavator

This heavy-duty excavator is designed for demanding excavation tasks. It features a powerful engine and hydraulic system for efficient operation and precise control.



ADDITIONAL IMAGES



Overview

Heavy-Duty Hydraulic Performance

Engineered for demanding mining and heavy-duty construction applications, this hydraulic excavator features a robust positive flow control system paired with a high-performance engine. Designed for reliability in extreme conditions ranging from -40°C to 50°C, it offers precision micro-operation and superior fuel economy. The machine integrates advanced structural reinforcement and intelligent maintenance features to maximize uptime and productivity on the job site.

Technical Specifications

Rated Power	212 kW
Operating Weight	35800 kg
Max Digging Depth	7357 mm
Standard Bucket Capacity	1.65 m ³
Track Shoe Width	600 mm
Engine Model	ISUZU 6HK1XKSC
Main Pump	Kawasaki

Operational Capabilities

Emission Compliance

China Stage III • US Tier 3 Final • EU Stage IIIA

Environmental Adaptability	Temperature range -40°C to 50°C, High-altitude up to 3000m, High dust conditions
Climbing Performance	35 °

Key Features

Performance Metrics

15 %

Productivity Increase

10 %

Fuel Economy Improvement

50 %

Structural Life Increase

Safety Standards

- TOPS/FOPS compliant cab
- Protective net device
- Anti-skid maintenance surfaces
- Rearview camera (optional)