

Heavy-Duty Electric Forklift, 12-25 Ton Capacity

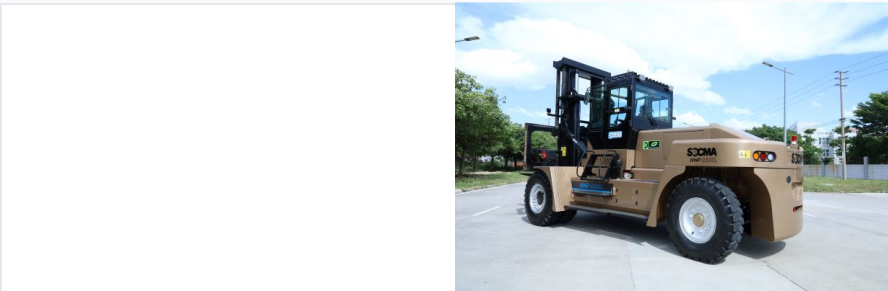
This heavy-duty electric forklift offers lifting capacities from 12 to 25 tons. It features a high-capacity battery for extended operation and provides zero emissions for environmentally sensitive applications.



ADDITIONAL IMAGES



Overview



High-capacity electric forklift designed for demanding material handling environments.

Heavy-Duty Electric Performance

This series of high-capacity electric forklifts offers a sustainable alternative to internal combustion engines, reducing power consumption costs by approximately 70%. Engineered for demanding industrial environments, these machines feature IP67-rated waterproofing for versatile operation and an advanced LFP battery system capable of over 4,000 charge cycles. With zero emissions, low noise levels, and improved lift speeds, this equipment ensures high productivity while maintaining strict environmental standards.

Technical Capabilities



Engineered for precision load handling and stability in ports and construction sites.

Key Performance Metrics

12 Ton

Minimum Capacity

25 Ton

Maximum Capacity

8 Hours

Minimum Daily Operation

4000 cycles

Battery Life Cycles

Performance Comparison

| Model | Capacity | Travel Speed (Laden) | Gradeability |
|-----------|----------|----------------------|--------------|
| HNF120-EL | 12000 | 23 km/h | 20% |
| HNF160-EL | 16000 | 26 km/h | 20% |
| HNF200-EL | 20000 | 26 km/h | 20% |
| HNF250-EL | 25000 | 25 km/h | 20% |

Features



Robust electrical system featuring dual-interface charging ports for high efficiency.

Core Advantages

- IP67 Waterproof protection for all-weather operation
- Permanent magnet synchronous motor system
- Dual international standard charging interface
- High energy density LFP battery technology
- Zero emissions and low noise design

Standards & Compliance

IP67, Zero Emission, Fast Charging Ready