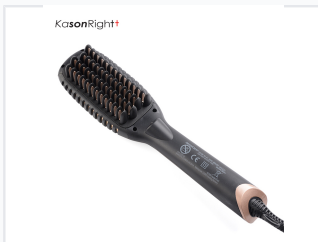


# Heated Hair Straightening Brush with Adjustable Temperature

This heated brush combines the functionality of a brush with a straightener. It features adjustable temperature settings and heated bristles to smooth and straighten hair.



## ADDITIONAL IMAGES



## Product Overview

### Versatile Styling Solution

This multifunctional hair styling tool combines the convenience of a brush with the performance of a professional straightener. Featuring advanced MCH heating technology and ceramic plates, it allows users to straighten, wave, or add volume to their hair with ease. Designed with safety and precision in mind, it includes an anti-scald exterior, precise digital temperature control, and an auto-shutoff feature for peace of mind.

## Technical Specifications

### Heat-up Time

**60 seconds**

Time to 120°C

### Temperature Settings

- 120
- 130
- 140
- 150
- 160
- 170
- 180
- 190
- 200
- 210

### Power Requirements

100-240V, 50-60Hz, 64W

### Heating Technology

MCH Heating Element with 36 Ceramic Plates

## Features & Functionality

### Safety Features

Anti-scald design • Auto shut-off (30 min) • Ionic protection

### Usability Features

- LED digital display
- 360° swivel cord
- Integrated hanging loop
- +/- temperature control buttons

### Styling Modes

Straighten, Wave, Volume, Ion