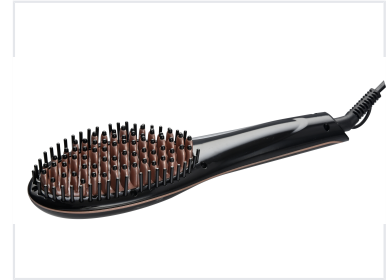


Heated Hair Straightening Brush Comb

This electric hot comb combines a traditional hairbrush with a straightening iron. It features heated bristles that glide through hair, smoothing and straightening as it combs.



Product Overview

Versatile Styling Solution

This heated hair straightening brush combines the functionality of a traditional hairbrush with the heat of a professional straightening iron. Designed for efficiency, it allows users to straighten, curl, flick, and twist hair in a single effortless pass. The ergonomic, lightweight design ensures comfortable handling, making it an ideal tool for both home use and travel.

Technical Specifications

Power Consumption	55 W
Voltage Compatibility	110-240V
Frequency	50-60Hz

Dimensions & Design

Dimensions	7.2 x 27 cm
Design Highlights	Sleek Design, Lightweight, Ergonomic Handle

Performance

Temperature Control

80 °C Min Temperature	230 °C Max Temperature
---------------------------------	----------------------------------

User Interface

LCD Display

Styling Functions

- Straightening
- Curling
- Flicking
- Twisting