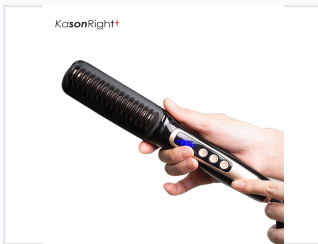


Heated Hair Straightening Brush

This heated brush is designed to straighten hair as it brushes. It features adjustable temperature settings and a digital display.



ADDITIONAL IMAGES



Product Overview

Professional Hair Straightening Performance

This heated hair straightening brush is designed for efficient, salon-quality styling at home. Equipped with advanced MCH heating technology and 17 ceramic heating pieces, it ensures rapid, even heat distribution for smooth results. The device features precise temperature control, an ionic generator to reduce frizz, and safety-focused design elements like anti-scald bristles and auto-shutoff functionality.

Technical Specifications

Power Requirements

32 W

Power Consumption

240 V

Max Voltage

Heating Capabilities

- 100
- 110
- 120
- 130
- 140
- 150
- 160
- 170
- 180

Heat-up Time

60 seconds

Features & Safety

Hair Type Compatibility

Wet hair • Dry hair

Safety Features

Anti-scald design, Auto shut-off (30 min), Ionic generator

Design & Ergonomics

Design Specifications

Feature	Detail
Display	LED Digital Display
Heating Elements	17 Ceramic Pieces
Cord	360° Swivel with Hanging Loop