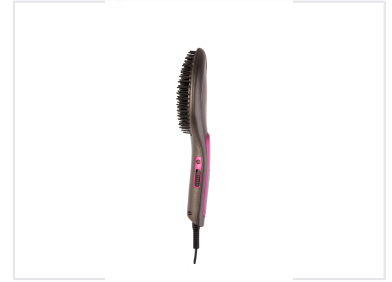


Heated Hair Straightening Brush

This hair straightening brush combines the functionality of a hairbrush with the straightening capabilities of a flat iron. It features heated bristles that glide through hair, smoothing and straightening strands while minimizing damage.



Product Overview

Professional Styling Performance

This heated hair straightening brush combines the convenience of a hairbrush with the efficiency of a flat iron. Designed for effortless styling, it features a high-precision ceramic panel that distributes heat evenly to minimize damage while smoothing strands. With instant heat-up technology and constant temperature control, it offers a reliable solution for all hair types.

Technical Specifications

Input Voltage	220-240Vac
Frequency	50-60Hz
Power Rating	75 W

Features

Design Highlights

- 360° rotatable wire
- LCD display
- Ceramic panel
- Ergonomic handle

Safety Features

Auto shut-off, Overheat protection

Performance Metrics

Key Performance Metrics

75 W Power
