

Hand Operated Hydraulic Brake Valve

This hand-operated brake valve is designed for hydraulic braking systems, offering high operation safety with minimal force. It is suitable for use in construction equipment, material handling vehicles, and agricultural machinery.



Overview

High-Performance Hydraulic Control

This hand-operated hydraulic brake valve is engineered for demanding mobile machinery, offering high operation safety with minimal operating force. It is specifically designed for integration into construction equipment, material handling vehicles, forestry, and agricultural machinery. The robust design ensures reliable, precise braking performance in heavy-duty applications.

Performance Metrics

Parameters

Oil input pressure	20MPa
Brake pressure	10MPa
Oil return pressure	≤0.5MPa
Viscosity range	10-380 mm ² /s
Oil temperature range	-20°C--100°C
Oil cleanliness	No less than Level GB/T 14039-2002 19/16 or Level NAS 1638 10
Mass	1.9Kg

Technical performance specifications for the PDF17-00 valve.

Oil Input Pressure

20 MPa

Max Input Pressure

Brake Pressure

10 MPa

Brake Pressure

Oil Return Pressure

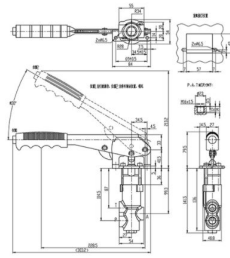
0.5 MPa

Operational Requirements

Oil Viscosity Range	10-380 mm ² /s
Operating Temperature	-20°C to 100°C
Required Oil Cleanliness	GB/T 14039-2002 19/16, NAS 1638 10

Physical Specifications

© Contour Connection Size



Dimensional drawing illustrating the valve's physical footprint and mounting parameters.

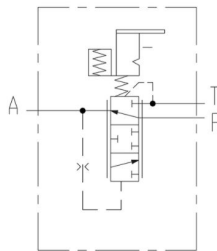
Key Dimensions

Dimension	Value
Overall Length	228.5 mm
Height	213.2 mm

Unit Mass 1.9 kg

System Integration

© Hydraulic system schematic



Hydraulic circuit schematic showing the internal configuration of ports A, T, and P.

Port Configuration

- Port A
- Port T
- Port P