

Hand Operated Brake Valve

This hand operated brake valve provides high operation safety with low operating force. It is suitable for use in construction equipment, material handling vehicles, and agricultural machinery.



Product Overview

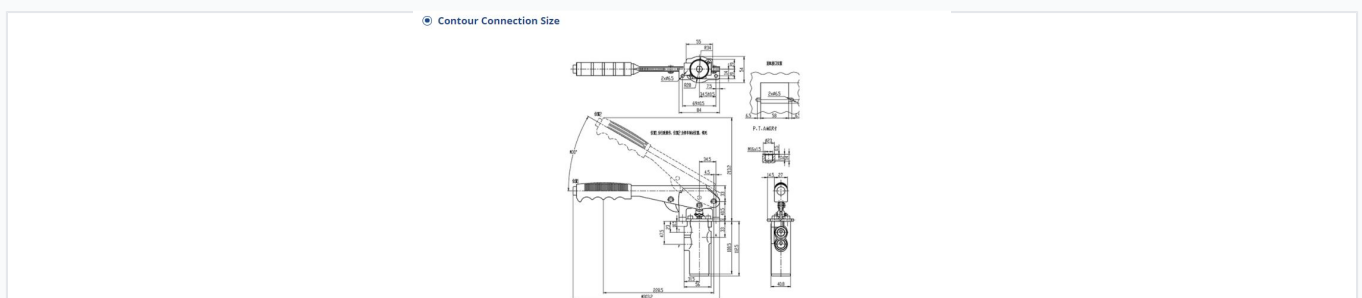
High-Performance Manual Brake Control

This hand-operated brake valve is engineered for superior safety and reliability in mobile machinery, including construction, forestry, and agricultural equipment. It features a robust, ergonomic design that allows for precise modulation of brake pressure through a manual lever mechanism. With a compact footprint and high-performance hydraulic specifications, it provides operators with consistent, responsive control for demanding braking applications.

Performance Specifications

Oil Input Pressure	20 MPa
Nominal Flow	25 L/min
Oil Return Pressure	0.5 MPa
Viscosity Range	10-380 mm ² /s
Operating Temperature Range	-20°C to 100°C
Required Oil Cleanliness	GB/T 14039-2002 19/16, NAS 1638 10

Physical Dimensions

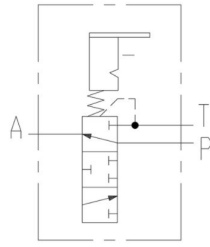


Detailed dimensional view including handle length, mounting hole spacing, and port configuration.

Total Mass	1.8 kg
Handle Length	228.5 mm
Maximum Height	213.2 mm
Total Height (Upright)	345 mm
Handle Adjustment Range	100 degrees
Mounting Hole Diameter	6.5 mm
Port Size	M16x1.5

Technical Schematic

Hydraulic system schematic



Internal hydraulic schematic illustrating the flow path between the actuator, tank, and pressure source.

Hydraulic Port Definitions

Port Label	Function
A	Actuator Connection
T	Tank Connection
P	Pressure Source Connection