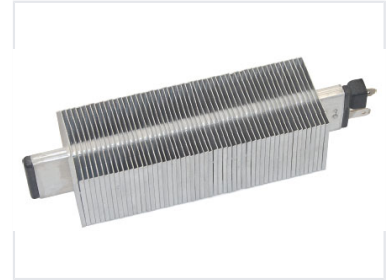


Hand Dryer Heating Element

This heating element is designed for use in hand dryers. It features metal fins to maximize the surface area for efficient heat dissipation and rapid heating of the surrounding air.



Product Overview

High-Efficiency Heating Solution

This heating element is engineered specifically for hand dryer applications, focusing on rapid thermal transfer. Featuring a specialized finned design, it maximizes surface area to ensure efficient heat dissipation into the surrounding airflow. Its robust construction ensures reliability and consistent performance for commercial restroom environments.

Technical Specifications

Primary Application

Hand Dryer Component

Construction Material

Metallic (Aluminum/Stainless Steel)

Design Features

Finned Heat Dissipation, Rapid Heating, Electrical Power Input