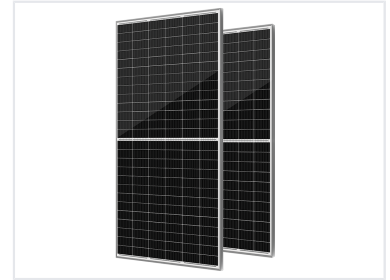


Half-Cell Solar Panel Module

Composed of half standard c-Si cells cut by laser, this module reduces current and cell-to-module loss. This design results in higher output and less power loss due to mismatch and shadow effects.



Product Overview

High-Efficiency Half-Cell Technology

The S2 series half-cell module utilizes advanced laser-cutting technology to split standard cells into halves, significantly reducing internal resistance and power loss. This innovative design offers superior performance under shading conditions and mitigates hot-spot effects, ensuring consistent energy output. With enhanced power yield and reduced installation costs, these modules are an ideal, robust solution for residential, commercial, and utility-scale solar projects.

Key Features

Performance Highlights

50 %

Shading Impact Reduction

Core Advantages

- Advanced half-cut cell design
- Reduced internal power loss
- Enhanced shading response
- Lower series resistance
- Minimized hot-spot effect

Applications

Suitable Applications

Residential, Commercial, Utility-scale projects

Technical Specifications

Engineering Data

Feature	Benefit
Cell Technology	Half-cut c-Si
Current Paths	Separated/Identical arrays
Defect Handling	Reusable intact halves