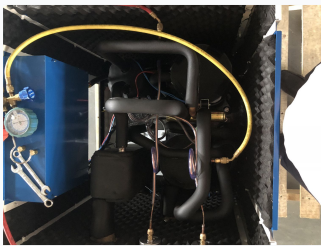


Ground Source Heat Pump for Heating and Cooling

This ground source heat pump provides both heating and cooling. It utilizes geothermal energy to maintain consistent temperature while offering energy savings.



ADDITIONAL IMAGES



Overview

Sustainable Climate Control

This ground source heat pump leverages the earth's constant year-round temperature to provide highly efficient heating and cooling for both residential and commercial buildings. Designed as a next-generation energy-saving solution, it offers significant operational cost reductions compared to conventional systems. The unit features a modular design for easy maintenance and independent billing, making it an ideal choice for schools, hospitals, and apartment complexes.

Performance Metrics

Key Performance Indicators

7 kW

Heating Capacity

3.5 kW

Cooling Capacity

5.5 COP

Max Energy Efficiency

Technical Specifications

Electrical Requirements

Parameter	Value
Rated Voltage	220V
Rated Frequency	50Hz
Rated Current	6A
Rated Power	1.7kW

Water System Data

Parameter	Value
Outlet Water Rated Temp	55°C
Outlet Water Max Temp	60°C
Water Flow	2000 L/H
Pipe Size (Hot/Cold)	DN25 mm

Physical Characteristics

Dimensions and Weight

- Dimensions: 706 x 706 x 650 mm
- Weight: 75 kg

Safety and Protection

IPX4 Defend Grade, Electric Shock Grade 1, Noise < 50dB

System Components

Main Collocation

- Evaporator
- Condenser
- Compressor
- Electric control system