

GripX MT TR281 Mud Terrain Passenger Car Tire

The GripX MT TR281 mud terrain tire is designed for off-road enthusiasts who desire an aggressive design. It delivers superior toughness and traction for extreme off-road conditions, along with balanced on-road performance.



Overview

Rugged Performance and Durability

The TR281 Mud Terrain tire is engineered for off-road enthusiasts who demand an aggressive design without sacrificing on-road performance. It features a specialized tread compound and reinforced construction designed to withstand extreme environments, including mud, snow, and gravel. With advanced self-cleaning capabilities and superior sidewall protection, this tire provides the reliability needed for both challenging off-road trails and daily driving.

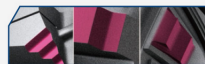
Performance Features

Features & Benefits



Aggressive block design with large shoulder grooves

- For extreme off road grip
- Resulting in superior off-road performance



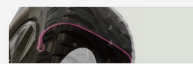
Stair step block face design

- For aggressive gripping and climbing capability
- Resulting in greater bite for off-road traction in sandy and muddy conditions



Strategically placed stone ejectors

- For release of trapped stones and mud
- Resulting in high traction & preventing damage



Reinforced high strength carcass structure design

- For enhanced climbing ability and steering stability on road and off-road
- Resulting in effective prevention of damage

Technical breakdown of the TR281's off-road performance features, including stone ejection and stair-step tread design.

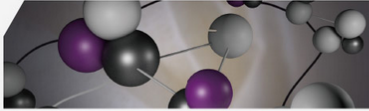
Key Benefits

- Aggressive block design with large shoulder grooves for extreme grip
- Strategically placed stone ejectors to prevent damage and maintain traction
- Stair-step block face design for enhanced climbing and biting capabilities
- Reinforced high-strength carcass for steering stability
- Advanced tread compound for improved tear and punch resistance

Off-Road Capabilities

Mud Terrain, Self-Cleaning, High Traction, Sand & Mud Optimized

Construction



New advance tread compound featuring functional polymers in combination with natural rubber

- For increased tread durability, self cleaning and high carrying capacity
- Resulting in improved resistance to tearing and punching and excellent



High sidewall turn-up

- For improved sidewall strength
- Resulting in prevention of sidewall damage

Construction details highlighting the high-strength sidewall and durable polymer-rubber tread compound.

Durability Specifications

Feature	Benefit
High sidewall turn-up	Enhanced sidewall strength and damage prevention
Reinforced carcass	Improved climbing ability and steering stability
Advanced polymer compound	Increased durability and carrying capacity