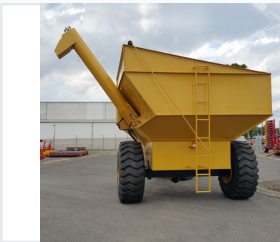


# Grain Cart for Agricultural Material Handling

This grain cart is used for rice transportation and automatic unloading. It features a spiral conveyor for efficient operation and reasonable power utilization.



## ADDITIONAL IMAGES



## Overview



A yellow grain cart featuring a large hopper and discharge auger, designed for efficient harvest material handling.

### High-Efficiency Grain Handling

This grain cart is engineered for efficient agricultural material handling, specifically designed for short-distance rice transportation and automated unloading. Utilizing a spiral conveyor system instead of manual or self-dump methods, it ensures high operating efficiency and optimized power utilization. The robust construction features a large carrying capacity, durable design for long service life, and a user-friendly structure that simplifies installation and maintenance.

## Technical Specifications

### Model Specifications

Specification	GC-8	GC-23
Capacity (Ton)	8	23
Weight (Kg)	2400	7000
Working Size (mm)	4800*3500*4500	6300*5500*5750
Transport Size (mm)	5170*3025*3200	7800*4050*4000
Tyre	23.1-26	26.5-25
Matched Power (Hp)	60-80	90-120
Unload Rate (mins)	25	25

### GC-650-4 Model Details

- Capacity: 650 bushels
- Wheel Configuration: 4 wheels

## Key Features



Operational view of a grain cart receiving crop from a combine harvester, demonstrating efficient field transport.

### Operational Benefits

Time Saving • Labor Saving • Easy Maintenance • Direct-to-Warehouse Unloading

### Key Features

Spiral Conveyor Unloading, Hydraulically Adjusted Conveying Port, Foldable Conveying Tube, High Operating Efficiency, Durable Structure