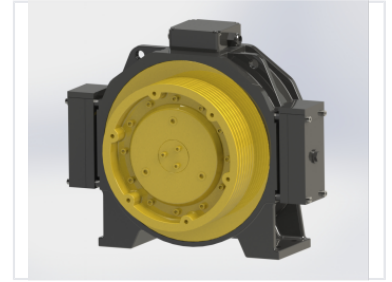
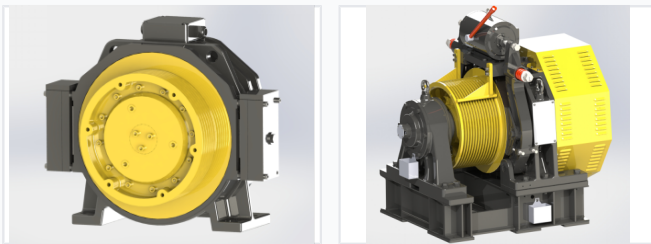


Gearless Elevator Traction Machine

This gearless elevator traction machine features a high-efficiency motor directly coupled to the traction sheave, which eliminates the need for a gearbox. It is designed for smooth and reliable operation with reduced energy consumption.



ADDITIONAL IMAGES



Product Overview

Gearless Traction Technology

The permanent magnet synchronous gearless traction machine is a high-performance power device designed for modern elevator systems. By utilizing direct-drive motor technology, it eliminates the need for a gearbox, resulting in superior transmission efficiency and reduced energy consumption. This system ensures smooth, quiet, and reliable vertical transportation, making it an ideal solution for buildings prioritizing safety, space-saving, and low maintenance.

Technical Specifications

Supported Traction Ratios	1:1, 2:1, 4:1, 6:1
Drive Mechanism	Permanent Magnet Synchronous Gearless

Key Features

Performance Advantages

- High transmission efficiency
- Low energy consumption
- Quiet operation
- Compact design
- Long service life
- Low maintenance requirements

Operational Highlights

0 None

Gearbox Requirement

Safety & Reliability

Safety Components

Integrated Brake System • Protective Enclosure • Robust Frame