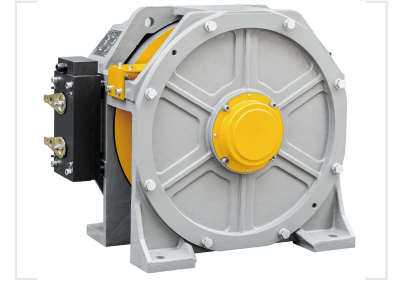


Gearless Elevator Traction Machine

This gearless elevator traction machine features a double support structure. It utilizes a permanent magnet synchronous motor for efficient and reliable operation in elevator systems.



Overview

High-Performance Gearless Traction

This gearless elevator traction machine is engineered for smooth, efficient vertical transportation in demanding environments. Utilizing a permanent magnet synchronous motor (PMSM), it delivers exceptional energy efficiency while significantly reducing long-term maintenance requirements. Its robust construction ensures reliable, quiet operation and precise control across a wide range of elevator system configurations.

Technical Specifications

Motor Technology	Permanent Magnet Synchronous Motor (PMSM)
Drive System	Gearless

Key Features

Performance Highlights

1 High Energy Efficiency	1 Low Operational Noise
------------------------------------	-----------------------------------

Application Suitability	Vertical Transportation, Elevator Systems, Commercial Use, Residential Use
-------------------------	--