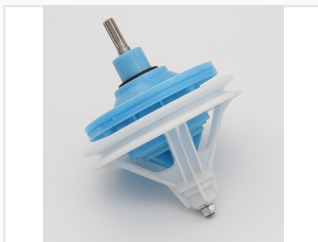


Gear Case Assembly with Splined Metal Shaft

This gear case assembly is designed for rotational motion applications. It features a splined metal shaft for efficient torque transmission, encased in durable blue and white plastic components.



ADDITIONAL IMAGES



Product Overview

Gear Case Assembly Overview

This gear case assembly is engineered for reliable mechanical power transmission. Featuring a durable construction with a splined metal shaft, it is designed for consistent rotational performance. The assembly includes an integrated pulley system and is built for secure mounting, making it a suitable replacement or component for mechanical systems such as washing machines.

Technical Specifications

Pulley Diameter	148 mm
Total Shaft Diameter	35 mm
Shaft Configuration	30mm + 5mm
Gear Teeth Count	10

Mounting and Installation

Mounting Holes	4
Included Screws	4

Identification

Model Identifiers	WT-001BX, 2016, 4217, 2015
-------------------	----------------------------