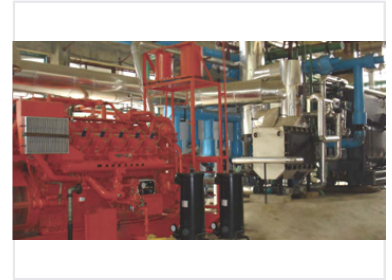


# Gas Power Generator for Industrial Use

This gas power generator is designed for electric power transmission and distribution applications. It features a robust engine, efficient cooling system, and advanced control mechanisms for reliable power generation.



## Overview

### High-Performance Industrial Power Generation

This gas-powered generator is engineered specifically for electric power transmission and distribution applications. Featuring a robust engine architecture and an advanced cooling system, it ensures consistent reliability for demanding industrial environments. The unit integrates sophisticated control mechanisms to optimize power generation efficiency, making it an ideal solution for power plants and distributed generation systems.

## Technical Specifications

### Key System Features

- High-performance engine design
- Advanced cooling system
- Integrated control mechanisms
- Distributed generation capability

### Operational Status

Industrial Grade • High Performance

### Primary Application

Electric Power Transmission, Distribution, Industrial Facilities, Power Plants