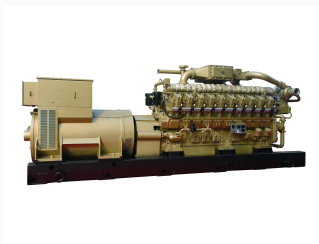


Gas Engine and Generator Set

The gas engine and generator set is designed for reliable and efficient power generation. These heavy-duty engines are engineered for continuous operation in demanding environments, providing stable power output for various applications.



ADDITIONAL IMAGES



Overview

High-Performance Power Generation

The 190 series gas engine and generator sets are engineered for reliable, continuous power generation in demanding industrial and commercial environments. These heavy-duty systems feature advanced combustion technology to deliver optimal fuel economy and reduced emissions, ensuring both efficiency and environmental compliance. With a robust, modular design and state-of-the-art control systems, these units provide stable power output and simplified maintenance for long-term operational success.

Key Features

Performance Highlights

190

Series Designation

Suitable Applications

Industrial Power Plants, CHP Systems, Emergency Backup, Continuous Power

Technical Specifications

System Capabilities

- Advanced combustion technology
- State-of-the-art control and monitoring
- Modular design for ease of maintenance
- Robust construction for durability

Operational Mode

Continuous Operation • Standby Ready