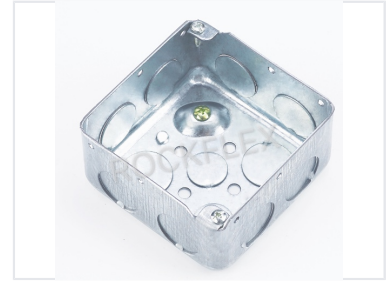


Galvanized Steel Conduit Box

This conduit box is constructed from galvanized steel for durability and corrosion resistance. It provides a secure enclosure for electrical connections and splices, featuring multiple knockouts and a removable cover.



Product Overview

Professional Grade Conduit Box

This 4-inch square drawn conduit box is engineered for reliable use in wall or ceiling installations for lighting fixtures, switches, and other outlet devices. With a depth of 2-1/8 inches, it provides an expanded 29.0 cubic inch capacity, making it ideal for applications requiring multiple conductor runs. Constructed from durable pre-galvanized steel, it ensures long-term corrosion resistance in demanding electrical environments.

Physical Specifications

Box Dimensions

4 in Width	2.125 in Depth	29 Cu. In. Capacity
----------------------	--------------------------	-------------------------------

Construction Type

Drawn Construction

Material

Pre-Galvanized Steel

Installation Features

Grounding

- Raised Ground Emboss (RGB)
- Installed 10/32 ground screw

Knockout Availability

Multiple KO Sizes, Concentric Knockouts (CKO)