

# Full Surface Induction Cooktop with TFT Control

This full-surface hob offers ultimate flexibility with precise induction control, allowing cookware to be placed anywhere on the surface. It features a TFT screen control with multiple cooking modes and functions.



## ADDITIONAL IMAGES



## Overview

	 <p><b>Flexibility</b> No fixed cooking area, allowing for more flexibility in cookware placement.</p>	 <p><b>Intuitive interface</b> The TFT control interface makes it simple for users to select the desired settings and cooking options.</p>	
--	---	--	--

Experience unparalleled flexibility with a full-surface design that eliminates fixed cooking zones.

## Advanced Full-Surface Induction Technology

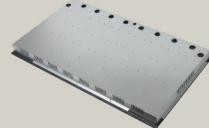
This full-surface induction cooktop offers ultimate flexibility, allowing you to place cookware anywhere on the hob surface. Equipped with an intuitive TFT control screen, it provides a user-friendly interface for precise navigation and cooking adjustments. Designed for modern kitchens, this unit combines efficient heating performance with a comprehensive suite of safety features for a seamless cooking experience.

## Technical Specifications



### Versatility

Induction heating with TFT control comes with a variety of cooking modes



### Precision

Half-bridge induction heating system with redesigned heating elements, providing more efficient use of space and energy.

The half-bridge induction system with redesigned heating elements ensures efficient use of space and energy.

<b>Product Model</b>	81F0
<b>Product Size</b>	910 x 520 x 62 mm
<b>Cut-out Size</b>	900 x 490 mm
<b>Power Rating</b>	7200 W
<b>Electrical Connection</b>	220-240V, 50-60Hz

## Features & Control



The intuitive TFT interface provides clear, precise control over temperature and cooking modes.

<b>Control Interface</b>	TFT Screen Control
<b>Safety &amp; Protection Functions</b>	Auto pan detection, Timer, Pause, Child lock, Residual heat indicator, Overheating protection, Water overflow protection