

Full Electric Injection Molding Machine

This full electric injection molding machine offers precision, high-speed operation, and energy-saving capabilities. It is suitable for use in electronics, communication, optics, medical treatment, food, and consumable goods industries.



Overview

High-Performance Electric Molding

This full electric injection molding machine is engineered for precision, high-speed operation, and superior energy efficiency. Designed with advanced servo control technology, it offers consistent performance suitable for demanding applications in electronics, communication, optics, and medical device manufacturing. Its robust construction and intelligent control systems provide a reliable solution for producing high-quality plastic components with tight tolerances.

Ideal Applications

Electronics, Communication, Optics, Medical Treatment, Food Packaging, Consumable Goods

Injection Unit

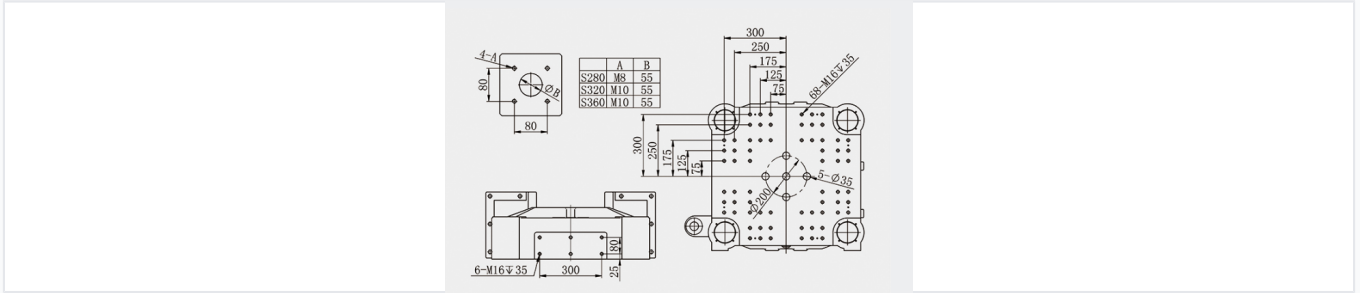
Injection Performance

Metric	Range
Screw Diameter	28 - 45 mm
Injection Capacity	77 - 254 cm ³
Injection Weight (PS)	73 - 242 g
Max Injection Pressure	166 - 287 Mpa
Max Injection Rate	185 - 477 cm ³ /s
Plasticizing Capacity	41 - 143 Kg/h

Max Injection Speed

300 mm/s

Clamping Unit



Detailed technical drawing illustrating mounting interfaces and machine layout.

Clamping Force

130 ton

Clamping Force

Clamping Specifications

- Drive Travel: 400 mm
- Min Mould Thickness: 200 mm
- Max Mould Thickness: 450 mm
- Ejecting Force: 30 kN
- Ejection Stroke: 100 mm

Physical Dimensions

	Number of		5		
Other information	Overall dimensions (length X width X height)	m	5.03X1.4X2.3		
	Machine weight	t	6.8	7.1	7.4

Physical dimensions and weight specifications for the machine.

Overall Dimensions	5.03m x 1.4m x 2.3m
Machine Weight	6.8t, 7.1t, 7.4t
Number of Thimbles	5