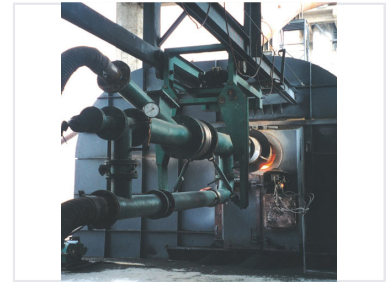


Forced Swirl Multi-channel Burner

The forced swirl multi-channel burner is an industrial combustion device that ensures efficient and stable burning of various fuels. Its design promotes thorough mixing of fuel and air, enhancing combustion efficiency and reducing emissions.



Overview

High-Performance Combustion Solution

The Forced Swirl Multi-channel Burner is an industrial combustion device engineered for high-performance and reliable operation in demanding environments. Its multi-channel configuration promotes thorough mixing of fuel and air, significantly enhancing combustion efficiency while reducing emissions. The integrated forced swirl design ensures superior flame stability and uniform heat distribution, making it an ideal choice for industrial furnaces, boilers, and process heaters.

Technical Features

Common Applications

- Industrial Furnaces
- Boilers
- Process Heaters

Combustion Technology

Forced Swirl, Multi-channel Configuration

Performance

Key Performance Benefits

1 High

Flame Stability

1 Enhanced

Combustion Efficiency