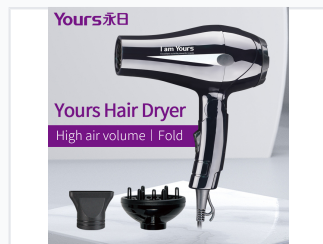
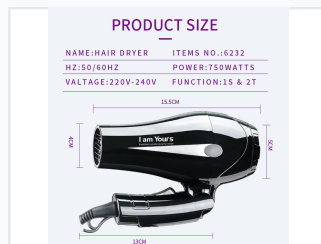


Foldable Travel Hair Dryer with Diffuser

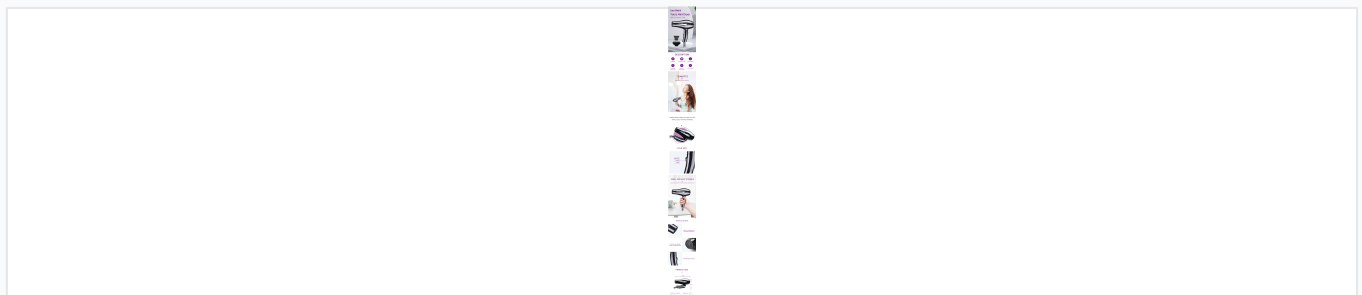
This travel hair dryer features a DC motor with 750W power and operates at 220V-240V 50Hz. It has a folding handle, multiple speed and temperature settings, and includes a diffuser and concentrator.



ADDITIONAL IMAGES



Product Overview



Comprehensive view of the foldable dryer, including diffuser and concentrator attachments.

Professional Travel Solution

This compact and lightweight hair dryer is expertly designed for travelers who refuse to compromise on hair styling. Featuring a foldable handle for maximum portability and space-saving storage, it provides powerful 750W performance for quick drying. Equipped with both a diffuser and a concentrator, this versatile tool offers flexible heat and speed settings to achieve salon-quality results anywhere in the world.

Technical Specifications

Rated Power

750 W

Power Output

Electrical Requirements

- Voltage: 220V-240V
- Frequency: 50/60Hz

Design and Portability

Dimensions

Component	Measurement
Total Length	15.5 cm
Nozzle Diameter	4 cm
Head Diameter	5 cm
Base Length	13 cm

Key Features

Foldable Handle, Compact Design, Overheat Protection, Anti-Flaming Construction

Performance Settings

Function Settings

- 1 Speed Setting
- 2 Temperature Settings
- Includes Diffuser
- Includes Concentrator

Safety Compliance

Constant Temperature Control • Noise Reduction Design