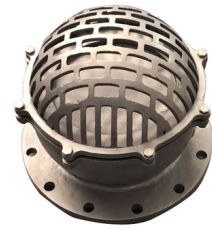


# Flanged Foot Valve with Strainer Basket

This flanged foot valve is equipped with a strainer basket and sealing ring. It opens under fluid pressure, allowing flow in one direction and preventing backflow to protect the pump.



## Product Overview

### Industrial Flanged Foot Valve

This flanged foot valve is an energy-saving solution designed for installation at the bottom of pump suction pipes. It effectively prevents backflow when the pump shuts off, ensuring water only flows forward. Engineered with a durable strainer basket, it resists clogging even when handling fluids containing suspended silt and sand, making it ideal for irrigation and various pumping applications.

## Technical Specifications

### Applicable Temperature

**0 °C**

Min Temp

**300 °C**

Max Temp

### Test Standards

- GB/T13927
- API598

### Size Range

NPS2~NPS20, DN50~DN500

### Connection Type

Flange, Screw

### Sealing Material

Soft sealing, Hardness sealing

### Main Material

WCB, Stainless steel

## Design Features

### Key Features

- Energy saving design
- Anti-clogging strainer basket
- Low head loss
- Cast steel body construction