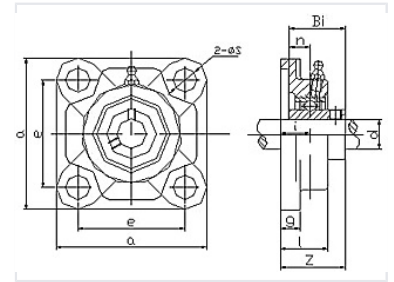


Flanged Bearing Unit UCF300

This flanged bearing unit is designed for robust performance in machinery and industrial applications. It features a square flange housing with four mounting holes for secure attachment.



Overview

Robust Flanged Bearing Unit

The UCF300 flanged bearing unit is engineered for reliable performance in demanding industrial machinery. It features a durable square flange housing with four mounting holes to ensure stable and secure attachment. Pre-lubricated and fully sealed, this unit minimizes contamination risks while providing smooth rotational support for shafts.

Technical Specifications

Dimensional Parameters

4 count

Mounting Holes

Standard Dimensional Reference

Dimension Identifier	Description
d	Shaft Diameter
a	Flange Width
e	Bolt Hole Spacing
Z	Overall Height
i	Bearing Inner Diameter
S	Bolt Size
n	Grease Fitting

Key Features

Square Flange Housing, Four-Bolt Mounting, Pre-lubricated, Sealed Design, Relubrication Port