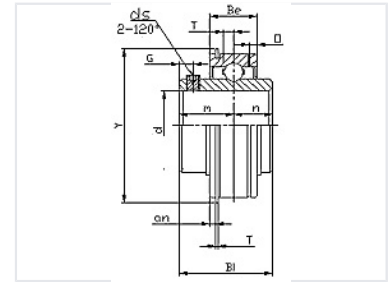


Flange Mounted Bearing Unit

This is a flange-mounted bearing unit designed for mounting onto machinery or equipment. The unit consists of a bearing housed within a flanged casing.



Product Overview

Industrial Flange Mounted Bearing Unit

This flange mounted bearing unit provides robust support for rotating shafts in industrial machinery. Designed for stability and ease of installation, the unit features a high-quality bearing integrated within a precision-engineered flanged casing. It is an essential component for ensuring smooth operation and load distribution in complex mechanical systems.

Technical Specifications

Dimensional Variables

- ds
- Be
- T
- D
- G
- Y
- p
- m
- n
- an
- Bl

Unit Type	Flange Mounted, Industrial Bearing
Series	SER200/SC200 Series