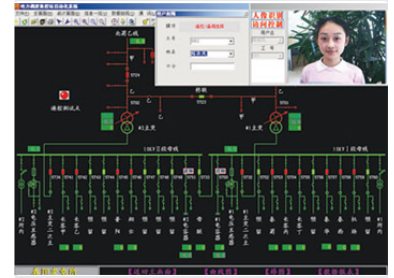


Facial Recognition Access Control System

This face recognition access control system enhances security through advanced facial recognition. It features real-time monitoring, customizable access levels, and reporting.



Product Overview

Advanced Biometric Security

This facial recognition access control system utilizes dynamic, non-contact technology to ensure secure and efficient personnel management. By capturing and comparing miniature portraits against a secure database, it provides a reliable, biometric-based authentication method. The system is designed to be user-friendly and highly secure, acting as an uncopiable 'biological key' that enhances traditional access control measures.

Key Features

System Advantages

Non-contact, High Security, Biometric Authentication, Easy Acquisition, Anti-Copying

Applications

Suitable Environments

- Office Buildings
- Residential Complexes
- Industrial Facilities

Technical Capabilities

Core Functions

Real-time Monitoring • Customizable Access Levels • Comprehensive Reporting