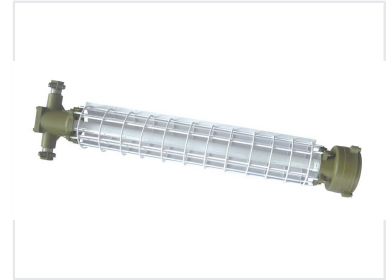


# Explosion-Proof LED Lighting Fixture

This explosion-proof LED lighting fixture is designed for hazardous environments. It features a robust protective cage and durable housing with multiple connection points, making it suitable for industrial and mining applications.



## Product Overview

### Industrial-Grade Illumination

This explosion-proof LED lighting fixture is engineered for demanding industrial and mining environments where safety and durability are paramount. Built with a high-strength, die-cast aluminum alloy housing and an advanced electrostatic coating, it offers exceptional resistance to corrosion and wear. The internal circuitry is specially protected against dust and moisture, ensuring high reliability and stability in harsh conditions.

## Construction & Design

Housing Material	Die-cast aluminum alloy
Surface Treatment	Electrostatic coating

## Performance Features

### Environmental Protection

- Dust-proof circuitry
- Moisture-proof circuitry
- Corrosion-resistant housing

### Lighting Performance

<b>1 Wide</b> Illumination Range	<b>100 High</b> Efficiency Rating
-------------------------------------	--------------------------------------

Key Benefits	Explosion-proof, Corrosion Resistant, Dust Resistant, Moisture Resistant, Energy Efficient
--------------	--